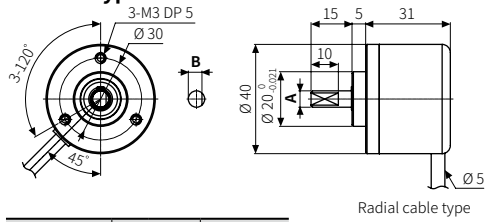




## Dimensions

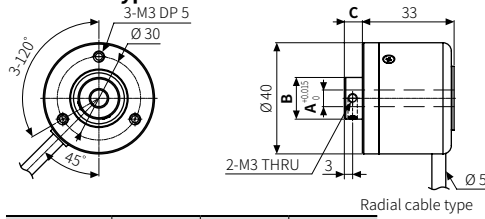
- Unit: mm, For the detailed drawings, follow the Autonics website.
- Following items are based on cable type.  
Refer to 'Specifications' for detailed specifications of cable, wire and connector.

### ■ Shaft type



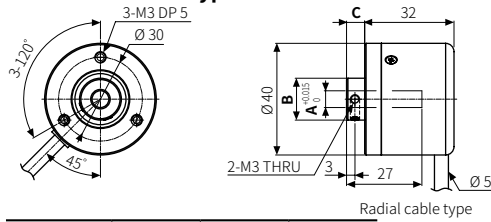
	A	B
E40S6	Ø 6 $\begin{matrix} -0.004 \\ -0.016 \end{matrix}$	5
E40S8	Ø 8 $\begin{matrix} -0.005 \\ -0.02 \end{matrix}$	7

### ■ Hollow type



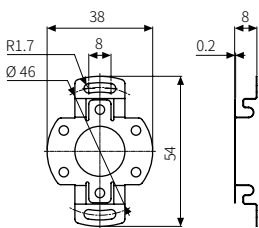
	A	B	C
E40H6	Ø 6	Ø 15	6.5
E40H8	Ø 8	Ø 15	6.5
E40H10	Ø 10	Ø 17	6.3
E40H12	Ø 12	Ø 17	6.3

### ■ Hollow Built-in type

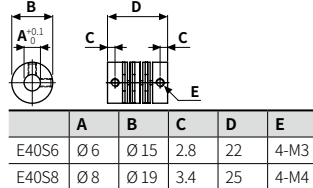


	A	B	C
E40HB6	Ø 6	Ø 15	6.5
E40HB8	Ø 8	Ø 15	6.5
E40HB10	Ø 10	Ø 17	6.3
E40HB12	Ø 12	Ø 17	6.3

### ■ Bracket



### ■ Coupling



- Parallel misalignment:  $\leq 0.25$  mm
- Angular misalignment:  $\leq 5^\circ$
- End-play:  $\leq 0.5$  mm

## Sold Separately

- Connector cable: CID6S-□, CID9S-□