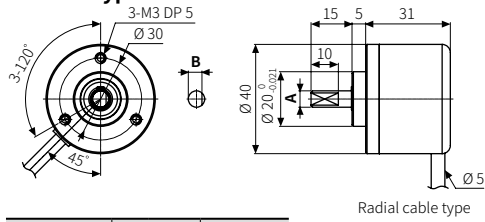




## Dimensions

- Unit: mm, For the detailed drawings, follow the Autonics website.
- Following items are based on cable type.  
Refer to 'Specifications' for detailed specifications of cable, wire and connector.

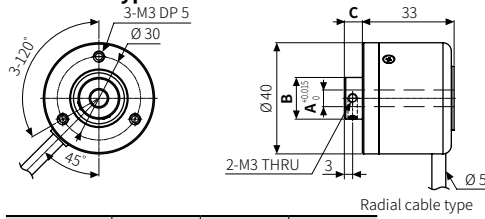
### ■ Shaft type



Radial cable type

	A	B
E40S6	Ø 6 <sup>-0.004</sup> / <sub>-0.016</sub>	5
E40S8	Ø 8 <sup>-0.005</sup> / <sub>-0.02</sub>	7

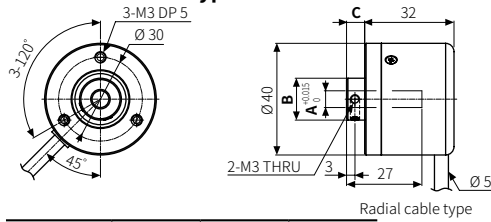
### ■ Hollow type



Radial cable type

	A	B	C
E40H6	Ø 6	Ø 15	6.5
E40H8	Ø 8	Ø 15	6.5
E40H10	Ø 10	Ø 17	6.3
E40H12	Ø 12	Ø 17	6.3

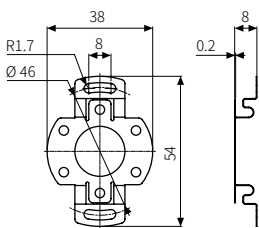
### ■ Hollow Built-in type



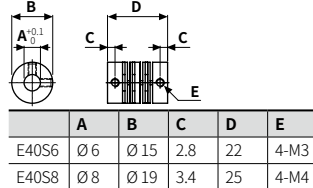
Radial cable type

	A	B	C
E40HB6	Ø 6	Ø 15	6.5
E40HB8	Ø 8	Ø 15	6.5
E40HB10	Ø 10	Ø 17	6.3
E40HB12	Ø 12	Ø 17	6.3

### ■ Bracket



### ■ Coupling



- Parallel misalignment: ≤ 0.25 mm
- Angular misalignment: ≤ 5°
- End-play: ≤ 0.5 mm

## Sold Separately

- Connector cable: CID6S-□, CID9S-□