

□ 30 mm

Push Button Switches



SQ3PF Series

CATALOG

For your safety, read and follow the considerations written in the instruction manual, other manuals and Autonics website.

The specifications, dimensions, etc. are subject to change without notice for product improvement. Some models may be discontinued without notice.

Features

- Smooth operation
- High electrical conductivity
- Long-lasting durability

Specifications

Series	SQ3PF Series
Actuation distance	5.0 to 5.5 mm
Actuation force	0.5 kgf (4.9 N) (per 1 contact)
Installation	Flush
Shock	300 m/s ² (≈ 30 G) in each X, Y, Z direction for 3 times
Shock (malfunction)	100 m/s ² (≈ 10 G) in each X, Y, Z direction for 3 times
Vibration	1.5 mm amplitude at frequency of 10 to 55 Hz (for 1 min) in each X, Y, Z direction for 2 hours
Vibration (malfunction)	1.5 mm amplitude at frequency of 10 to 55Hz (for 1 min) in each X, Y, Z direction for 10 minutes
Mechanical life cycle (control unit life cycle)	Returned: ≥ 1 million operations (20 operations/min)
Ambient temperature	-15 to 55 °C, storage: -25 to 65 °C (no freezing or condensation)
Ambient humidity	35 to 85 %RH, storage: 35 to 85 %RH (no freezing or condensation)
Protection structure	Control unit: IP52 (IEC standard)
Approval	CE, cULus, ENEC, ETL, PS
Control unit weight	≈ 22 g
Housing weight	≈ 7 g

Contact blocks	
Power supply / current	110 VAC ~ / 10 A, 250 VAC ~ / 6 A
Dielectric strength	2,500 VAC ~ 50/60 Hz for 1 minute
Insulation resistance	≥ 1,000 MΩ (500 VDC ≡ megger)
Contact resistance	≤ 20 mΩ (initial)
Electrical life cycle	≥ 100,000 operations (20 operations/min)
Contact material	AgNi10
Approval	CE, cULus, ENEC, ETL, PS
Weight	Modular type: ≈ 10 g, Singular type: ≈ 11 g
LED blocks	
Rated voltage	AC/DC voltage type: 12-24 VAC ~ 50/60 Hz, 12-24 VDC ≡ AC voltage type: 110-220 VAC ~ 50/60 Hz
Current consumption	≤ 20 mA
Approval	CE, cULus, ENEC
Weight	AC/DC voltage type: ≈ 11 g, AC voltage type: ≈ 12 g

Sold Separately

- Contact blocks (SA□-C□□)
- LED blocks (SA□-L□□□)
- Locking handle (SA□-LH)

Ordering Information

This is only for reference. For selecting the specified model, follow the Autonics website.

Model is based on control unit+block combination. Control units or blocks are sold separately. In case of block, refer to control switch accessories.

■ Non-illuminated

SQ3PFS	-	P	1	1	2	3
Control unit				Block		

1 Button color

R: Red
B: Blue
G: Green
Y: Yellow
K: Black

2 Contact block

A: 1 A contact
2A: 2 A contacts
3A: 3 A contacts
B: 1 B contact
2B: 2 B contacts
3B: 3 B contacts
AB: 1 A contact, 1 B contact
2AB: 2 A contacts, 1 B contact
A2B: 1 A contact, 2 B contacts

3 Block

No mark: Singular type
M: Modular type

Model	Contact block		LED block	
	A contact	B contact	AC/DC voltage	AC voltage
SQ3PFS-P1□A(M)	1	-	-	-
SQ3PFS-P1□2A(M)	2	-		
SQ3PFS-P1□3A(M)	3	-		
SQ3PFS-P1□B(M)	-	1		
SQ3PFS-P1□2B(M)	-	2		
SQ3PFS-P1□3B(M)	-	3		
SQ3PFS-P1□AB(M)	1	1		
SQ3PFS-P1□2AB(M)	2	1		
SQ3PFS-P1□A2B(M)	1	2		

■ Illuminated

SQ3PFS	1	-	P	3	2	3	4	5	6
Control unit				Block					

1 Letter marking

No mark: Push (control unit + singular type block) ⁰¹⁾

No mark: None (control unit + modular type block)

U: None (control unit) ⁰²⁾

2 Button color

R: Red
B: Blue
G: Green
Y: Yellow
W: White

3 Arrow direction

No mark: None
L: Left / Right
U: Up / Down

4 Contact block

A: 1 A contact
2A: 2 A contacts
B: 1 B contact
2B: 2 B contacts
AB: 1 A contact, 1 B contact

5 LED block

D: 1 AC/DC voltage type
L: 1 AC voltage type

6 Block

No mark: Singular type
M: Modular type

Model	Contact block		LED block			
	A contact	B contact	AC/DC voltage	AC voltage		
SQ3PFS-P3□AD(M)	1	-	1	-		
SQ3PFS-P3□2AD(M)	2	-				
SQ3PFS-P3□BD(M)	-	1				
SQ3PFS-P3□2BD(M)	-	2	-	1		
SQ3PFS-P3□ABD(M)	1	1				
SQ3PFS-P3□AL(M)	1	-				
SQ3PFS-P3□2AL(M)	2	-				
SQ3PFS-P3□BL(M)	-	1				
SQ3PFS-P3□2BL(M)	-	2				
SQ3PFS-P3□ABL(M)	1	1				
SQ3PFS-P3□LAD(M)	1	-			1	-
SQ3PFS-P3□2AD(M)	2	-				
SQ3PFS-P3□LBD(M)	-	1				
SQ3PFS-P3□L2BD(M)	-	2	-	1		
SQ3PFS-P3□LABD(M)	1	1				
SQ3PFS-P3□LAL(M)	1	-				
SQ3PFS-P3□L2AL(M)	2	-				
SQ3PFS-P3□LBL(M)	-	1				
SQ3PFS-P3□L2BL(M)	-	2				
SQ3PFS-P3□LABL(M)	1	1				
SQ3PFS-P3□UAD(M)	1	-			1	-
SQ3PFS-P3□U2AD(M)	2	-				
SQ3PFS-P3□UBD(M)	-	1				
SQ3PFS-P3□U2BD(M)	-	2	-	1		
SQ3PFS-P3□UABD(M)	1	1				
SQ3PFS-P3□UAL(M)	1	-				
SQ3PFS-P3□U2AL(M)	2	-				
SQ3PFS-P3□UBL(M)	-	1				
SQ3PFS-P3□U2BL(M)	-	2				
SQ3PFS-P3□UABL(M)	1	1				

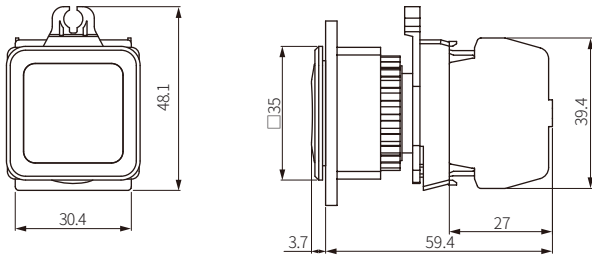
01) Only for non arrow direction model.

02) Only available for control unit. Select the block separately.

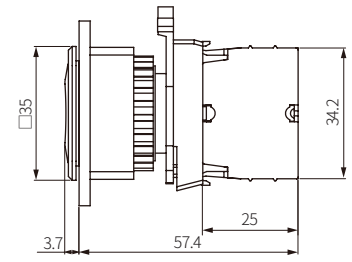
Dimensions

- Unit: mm, For the detailed drawings, follow the Autonics website.
- Panel thickness: ≤ 6 mm

■ SQ3PF-P □ (singular type block)



■ SQ3PF-P □ M (modular type block)



■ Panel cut-out

