

Ø 30 mm Push Button Switches



S3PR / S3PF Series CATALOG

For your safety, read and follow the considerations written in the instruction manual, other manuals and Autonics website.

The specifications, dimensions, etc. are subject to change without notice for product improvement. Some models may be discontinued without notice.

Features

- Smooth operation
- High electrical conductivity
- Long-lasting durability

Specifications

| Series | S3PR Series | S3PF Series |
|---|--|-------------|
| Actuation distance | 5.0 to 5.5 mm | |
| Actuation force | 0.5 kgf (4.9 N) (per 1 contact) | |
| Installation | Extended | Flush |
| Shock | 300 m/s ² (≈ 30 G) in each X, Y, Z direction for 3 times | |
| Shock (malfunction) | 100 m/s ² (≈ 10 G) in each X, Y, Z direction for 3 times | |
| Vibration | 1.5 mm amplitude at frequency of 10 to 55 Hz (for 1 min) in each X, Y, Z direction for 2 hours | |
| Vibration (malfunction) | 1.5 mm amplitude at frequency of 10 to 55Hz (for 1 min) in each X, Y, Z direction for 10 minutes | |
| Mechanical life cycle (control unit life cycle) | Returned: ≥ 1 million operations (20 operations/min) | |
| Ambient temperature | -15 to 55 °C, storage: -25 to 65 °C (no freezing or condensation) | |
| Ambient humidity | 35 to 85 %RH, storage: 35 to 85 %RH (no freezing or condensation) | |
| Protection structure | Control unit: IP52 (IEC standard) | |
| Approval | CE ENEC us ENEC PS | |
| Control unit weight | 21.5 g | |
| Housing weight | ≈ 7 g | |

| Contact blocks | |
|------------------------|---|
| Power supply / current | 110 VAC~ / 10 A, 250 VAC~ / 6 A |
| Dielectric strength | 2,500 VAC~ 50/60 Hz for 1 minute |
| Insulation resistance | ≥ 1,000 MΩ (500 VDC≡ megger) |
| Contact resistance | ≤ 20 mΩ (initial) |
| Electrical life cycle | ≥ 100,000 operations (20 operations/min) |
| Contact material | AgNi10 |
| Approval | CE ENEC us ENEC PS |
| Weight | Modular type: ≈ 10 g, Singular type: ≈ 11 g |
| LED blocks | |
| Rated voltage | AC/DC voltage type: 12-24 VAC~ 50/60 Hz, 12-24 VDC≡ AC voltage type: 110-220 VAC~ 50/60 Hz |
| Current consumption | ≤ 20 mA |
| Approval | CE ENEC us ENEC |
| Weight | AC/DC voltage type: ≈ 11 g, AC voltage type: ≈ 12 g |

Sold Separately

- Contact blocks (SA□-C□□)
- LED blocks (SA□-L□□□)
- Locking handle (SA□-LH)
- Switch washer (SA-SW□)

Ordering Information

This is only for reference. For selecting the specified model, follow the Autonics website.

Model is based on control unit+block combination. Control units or blocks are sold separately. In case of block, refer to control switch accessories.

■ Non-illuminated

| | | | | | | | |
|--------------|----------|---|----------|----------|----------|----------|----------|
| S3P | 1 | - | P | 1 | 2 | 3 | 4 |
| Control unit | | | | | | Block | |

1 Button type

R: Extended
F: Flush

2 Button color

R: Red
B: Blue
G: Green
Y: Yellow
K: Black

3 Contact block

A: 1 A contact
2A: 2 A contacts
3A: 3 A contacts
B: 1 B contact
2B: 2 B contacts
3B: 3 B contacts
AB: 1 A contact, 1 B contact
2AB: 2 A contacts, 1 B contact
A2B: 1 A contact, 2 B contacts

4 Block

No mark: Singular type
M: Modular type

| Model | Contact block | | LED block | |
|----------------|---------------|-----------|---------------|------------|
| | A contact | B contact | AC/DC voltage | AC voltage |
| S3PR-P1□A(M) | 1 | - | - | - |
| S3PR-P1□2A(M) | 2 | - | | |
| S3PR-P1□3A(M) | 3 | - | | |
| S3PR-P1□B(M) | - | 1 | | |
| S3PR-P1□2B(M) | - | 2 | | |
| S3PR-P1□3B(M) | - | 3 | | |
| S3PR-P1□AB(M) | 1 | 1 | | |
| S3PR-P1□2AB(M) | 2 | 1 | | |
| S3PR-P1□A2B(M) | 1 | 2 | | |
| S3PF-P1□A(M) | 1 | - | | |
| S3PF-P1□2A(M) | 2 | - | - | - |
| S3PF-P1□3A(M) | 3 | - | | |
| S3PF-P1□B(M) | - | 1 | | |
| S3PF-P1□2B(M) | - | 2 | | |
| S3PF-P1□3B(M) | - | 3 | | |
| S3PF-P1□AB(M) | 1 | 1 | | |
| S3PF-P1□2AB(M) | 2 | 1 | | |
| S3PF-P1□A2B(M) | 1 | 2 | | |

■ Illuminated

| | | | | | | | | |
|--------------|----------|---|----------|----------|----------|----------|----------|----------|
| S3PF | 1 | - | P | 3 | 2 | 3 | 4 | 5 |
| Control unit | | | | | | Block | | |

1 Letter marking

No mark: Push (control unit + singular type block)

No mark: None (control unit + modular type block)

U: None (control unit) ⁰¹⁾

2 Button color

R: Red
B: Blue
G: Green
Y: Yellow
W: White

3 Contact block

A: 1 A contact
2A: 2 A contacts
B: 1 B contact
2B: 2 B contacts
AB: 1 A contact, 1 B contact

4 LED block

D: 1 AC/DC voltage type
L: 1 AC voltage type

5 Block

No mark: Singular type
M: Modular type

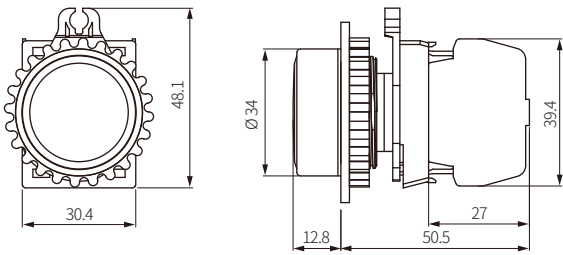
| Model | Contact block | | LED block | |
|----------------|---------------|-----------|---------------|------------|
| | A contact | B contact | AC/DC voltage | AC voltage |
| S3PF-P3□AD(M) | 1 | - | 1 | - |
| S3PF-P3□2AD(M) | 2 | - | | |
| S3PF-P3□BD(M) | - | 1 | | |
| S3PF-P3□2BD(M) | - | 2 | | |
| S3PF-P3□ABD(M) | 1 | 1 | | |
| S3PF-P3□AL(M) | 1 | - | - | 1 |
| S3PF-P3□2AL(M) | 2 | - | | |
| S3PF-P3□BL(M) | - | 1 | | |
| S3PF-P3□2BL(M) | - | 2 | | |
| S3PF-P3□ABL(M) | 1 | 1 | | |

01) Only available for control unit. Select the block separately.

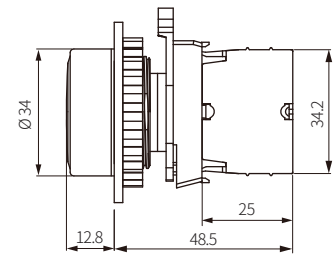
Dimensions

- Unit: mm, For the detailed drawings, follow the Autonics website.
- Panel thickness: ≤ 6 mm

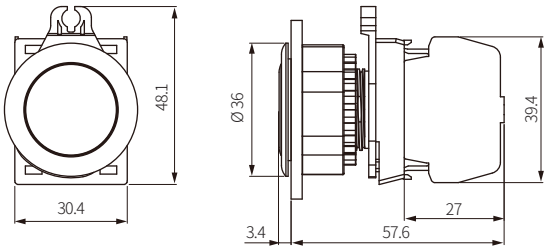
■ S3PR-P1 □ (non-illuminated, extended, singular type block)



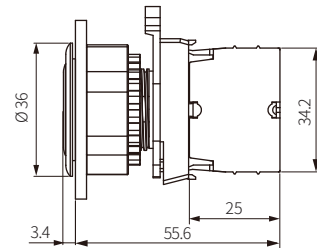
■ S3PR-P1 □ M (non-illuminated, extended, modular type block)



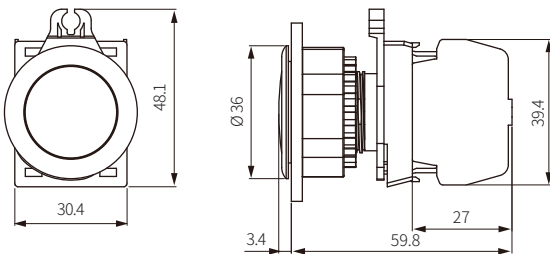
■ S3PF-P1 □ (non-illuminated, flush, singular type block)



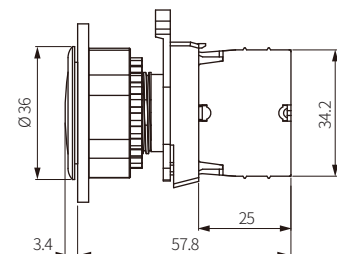
■ S3PF-P1 □ M (non-illuminated, flush, modular type block)



■ S3PF-□-P3 □ (illuminated, flush, singular type block)



■ S3PF-□-P3 □ M (illuminated, flush, modular type block)



■ Panel cut-out

