

□ 30 mm Pilot Lights



LQ3RF Series CATALOG

For your safety, read and follow the considerations written in the instruction manual, other manuals and Autonics website.

The specifications, dimensions, etc. are subject to change without notice for product improvement. Some models may be discontinued without notice.

Features

- High luminance LED
- Available in various colors
- Long-lasting durability

Specifications

Series	LQ3RF Series
Installation	Flush
Shock	300 m/s ² (≈ 30 G) in each X, Y, Z direction for 3 times
Shock (malfunction)	100 m/s ² (≈ 10 G) in each X, Y, Z direction for 3 times
Vibration	1.5 mm amplitude at frequency of 10 to 55 Hz (for 1 min) in each X, Y, Z direction for 2 hours
Vibration (malfunction)	1.5 mm amplitude at frequency of 10 to 55 Hz (for 1 min) in each X, Y, Z direction for 10 minutes
Ambient temperature	-15 to 55 °C, storage: -25 to 65 °C (no freezing or condensation)
Ambient humidity	35 to 85 %RH, storage: 35 to 85 %RH (no freezing or condensation)
Protection structure	Light unit: IP52 (IEC standard)
Approval	CE, RoHS, ENEC
Light unit weight	≈ 22 g
Housing weight	≈ 7 g

LED blocks	
Rated voltage	AC/DC voltage type: 12-24 VAC ~ 50/60 Hz, 12-24 VDC = AC voltage type: 110-220 VAC ~ 50/60 Hz
Current consumption	≤ 20 mA
Approval	CE, RoHS, ENEC
Weight	AC/DC voltage type: ≈ 11 g, AC voltage type: ≈ 12 g

Sold Separately

- LED blocks (SA□-L□□□□)
- Locking handle (SA□-LH)

Ordering Information

This is only for reference. For selecting the specified model, follow the Autonics website.

Model is based on light unit+block combination. Light units or blocks are sold separately. In case of block, refer to control switch accessories.

LQ3RF	①	-	L	4	②	③	④
		Light unit				Block	

① Letter marking

No mark: Lamp (light unit + singular type block)

No mark: None (light unit + modular type block)

U: None (light unit)⁰¹⁾

② Head color

R: Red

B: Blue

G: Green

Y: Yellow

W: White

③ LED block

D: 1 AC/DC voltage type

L: 1 AC voltage type

④ Block

No mark: Singular type

M: Modular type

Model	Contact block		LED block	
	A contact	B contact	AC/DC voltage	AC voltage
LQ3RF-L4□D(M)	-	-	1	-
LQ3RF-L4□L(M)	-	-	-	1

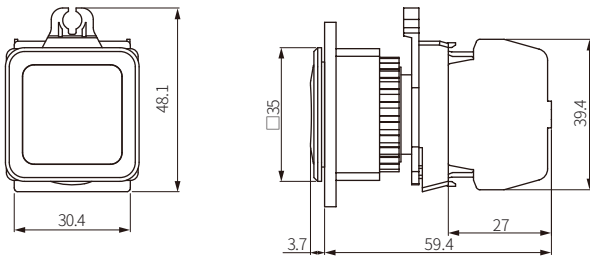
01) Only available for light unit. Select the block separately.

Dimensions

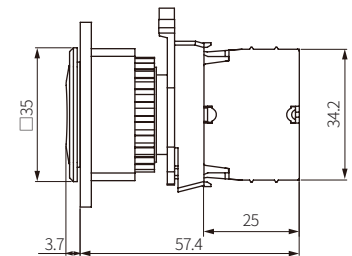
• Unit: mm, For the detailed drawings, follow the Autonics website.

• Panel thickness: ≤ 6 mm

■ LQ3RF-L4 □ (singular type block)



■ LQ3RF-L4 □ M (modular type block)



■ Panel cut-out

